

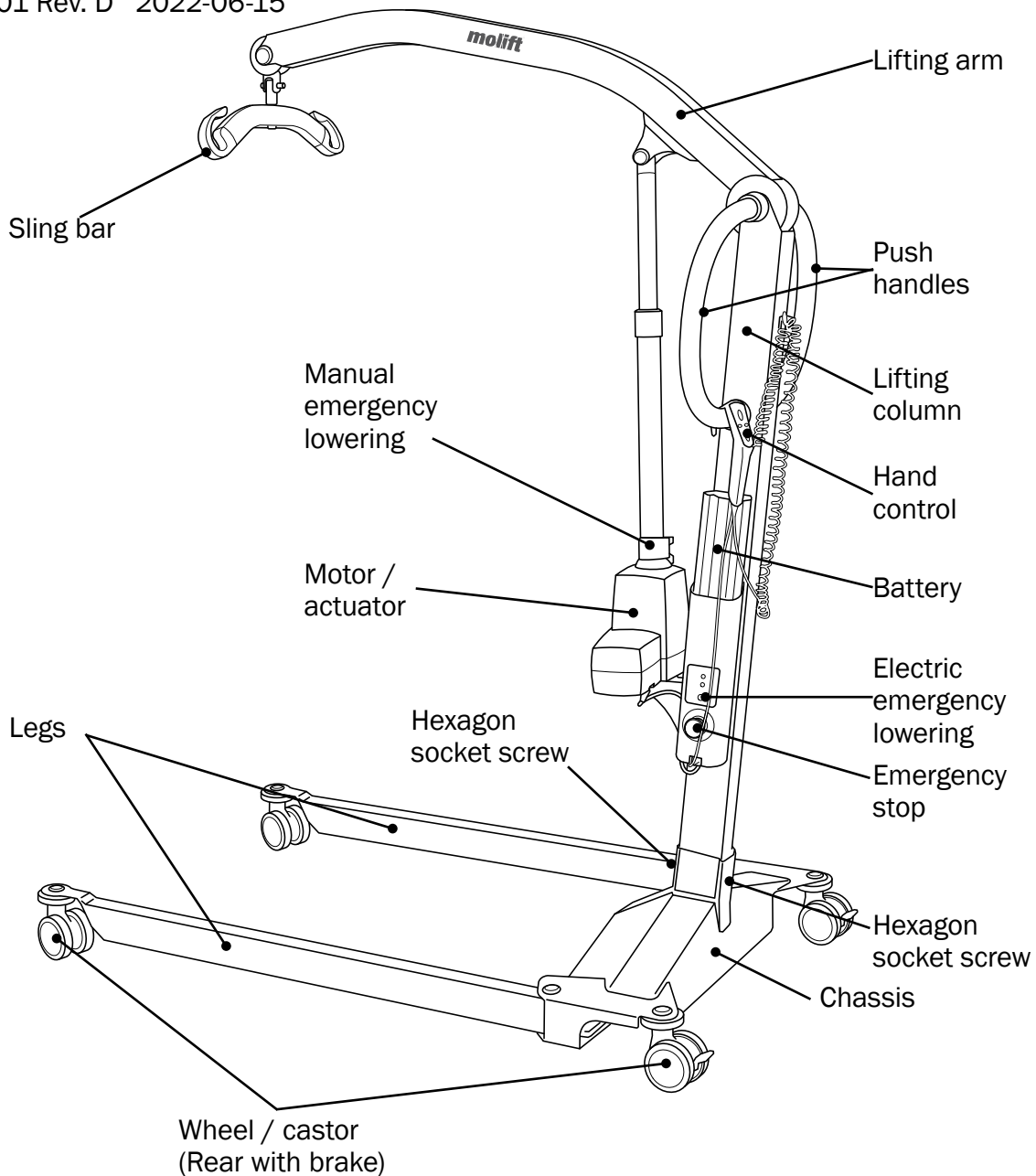
Molift Mover 180, 205, and 300



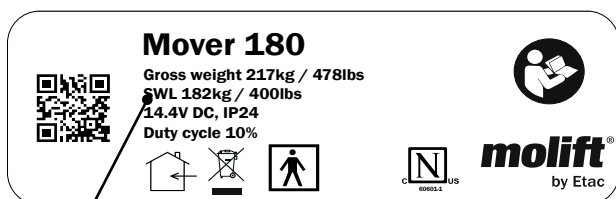
Periodic inspection checklist (EN)

In accordance with ISO:10535

PI06101 Rev. D 2022-06-15



Product label, Mover 180



SWL value

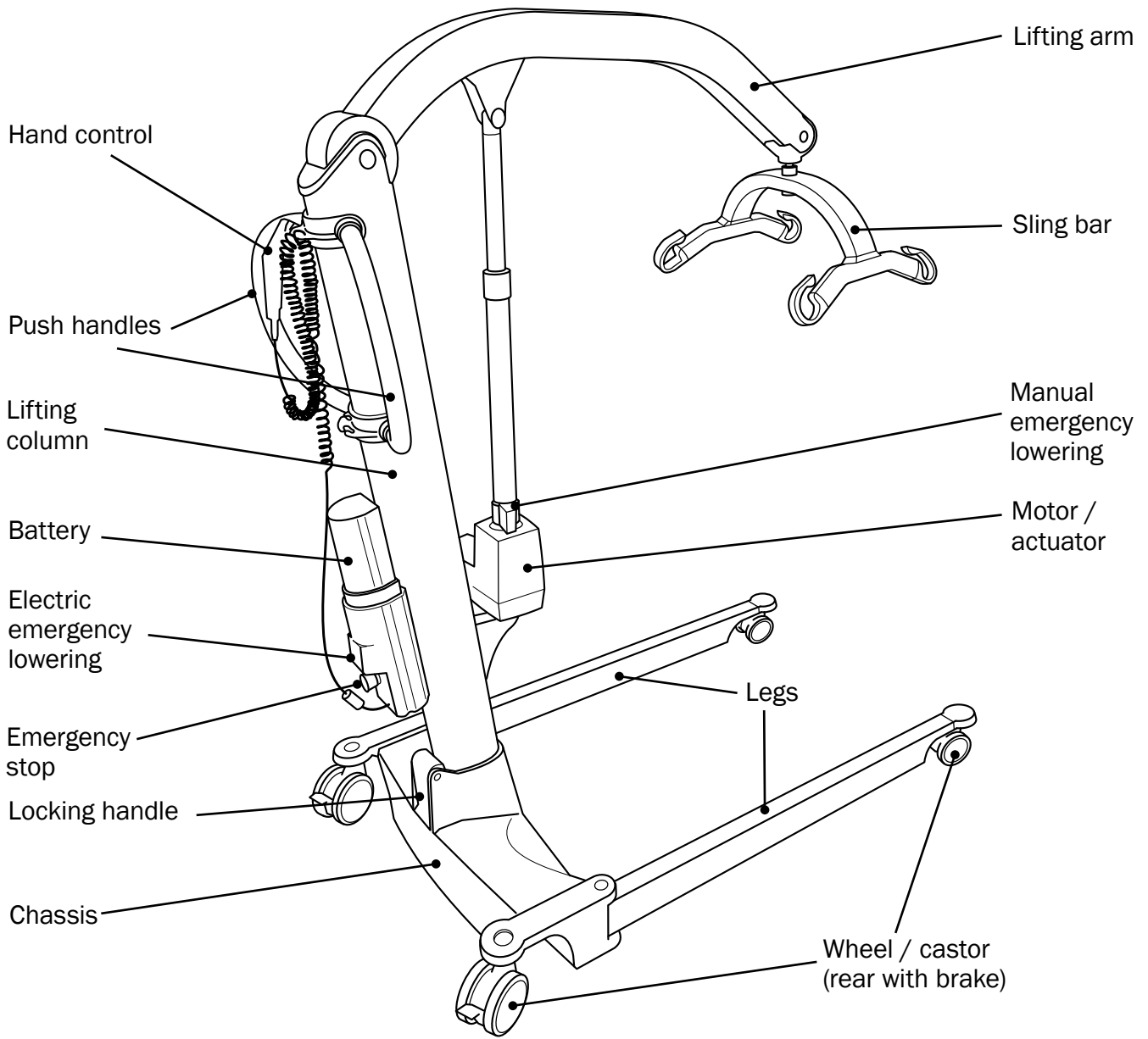
ID label, Mover 180



Serial no.

Article no.

Production date



Product label, Mover 205

Mover 205
 Gross weight 244kg / 538lbs
 SWL 205kg / 452lbs
 26.4V DC, IP24
 Duty cycle 10%

Icons: Home, No open flame, Person, CE mark, and Molift logo.

SWL value

ID label, Mover 205

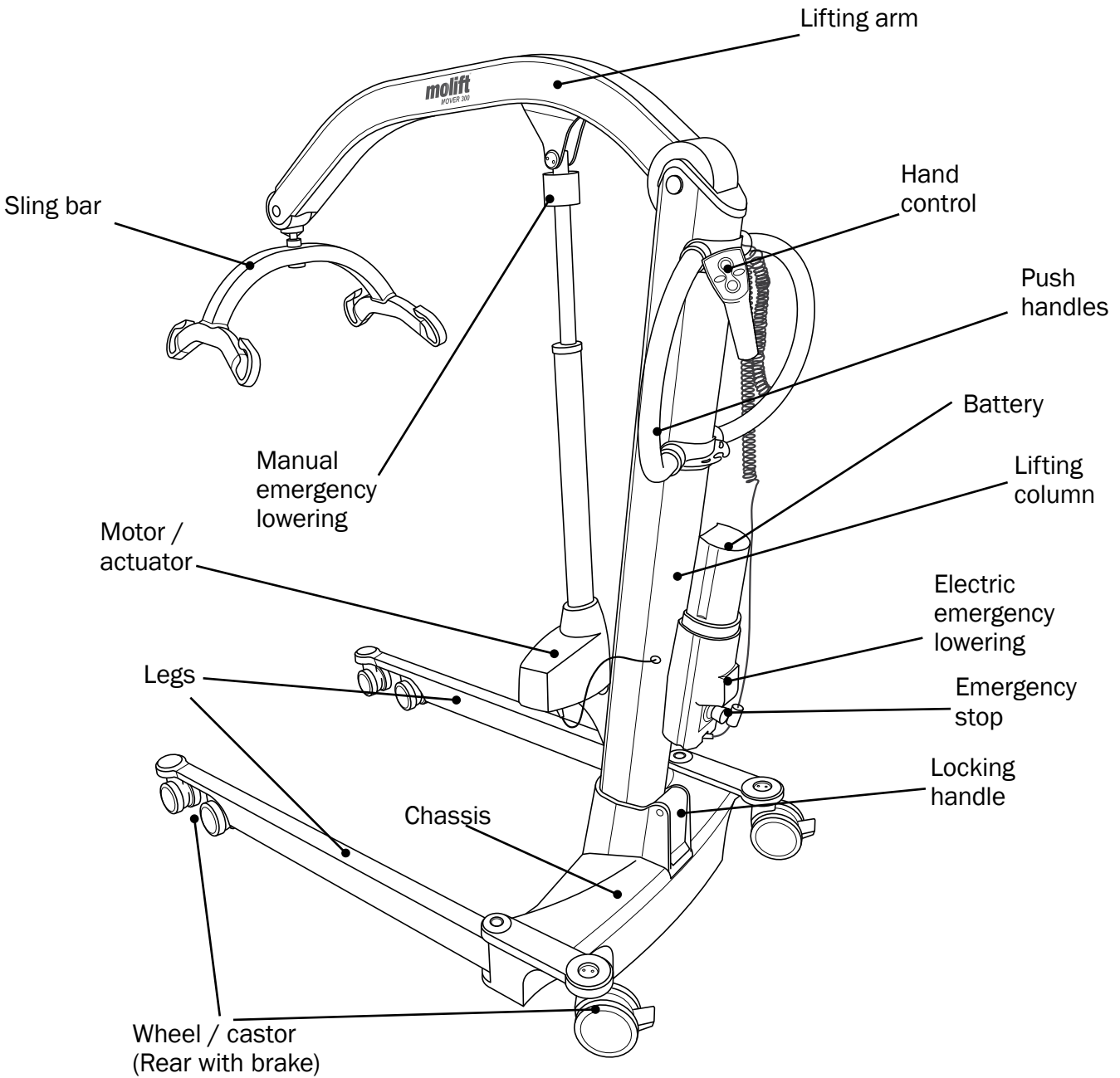
(01)XXXXXXXXXXXXXXXX(11)XXXXXXXX(21)XXXXXX
 REF ABCDEFGHIJ
 SN XXXXXX
 YYY-MM-DD
 Etac A/S
 Parallevej 3
 DK-8751 Gedved
 www.etac.com

MD CE

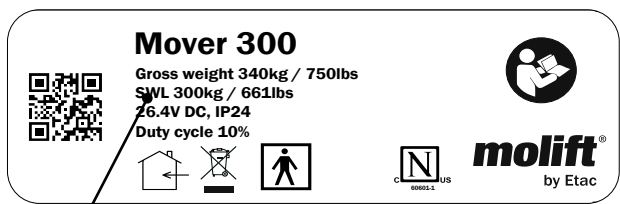
Serial no.

Article no.

Production date



Product label, Mover 300



SWL value

ID label, Mover 300



Serial no.

Article no.

Production date

A copy of this document is available for download at www.etac.com.

Scan QR code on product label for accessing product home page. The user manual can be found in the document section.

Article no. (see ID label):

.....

Serial no. (see ID label):

.....

Production Year:

.....

Owner:

.....


Sling shall be inspected separately and is not included in this inspection.


Specify model:

- Mover 180
- Mover 205
- Mover 300

Situation of use

- Home
- Hospital
- Nursing home
- Other

 **The periodic inspection is to be performed by a person who is suitable and properly qualified and well acquainted with the design, use and care of the hoist**


 **The hoist's software Molift Service tool provides option to enter date of PI and name of inspector along with additional information. Molift recommends adding all observations / remarks concerning the hoist in the Molift Service tool for complete history log of the hoist**

Service light indicator

Note colour of service light indicator:

Status	Service light	Mode
	(No light)	Power saving (Stand by)
	Green	Ready for use
	Yellow	Order service
	Red	Perform service
	Red (and sound when activated)	Perform service immediately

Visual examination

 **Visual examination of load bearing structure to make sure there is no damage, cracks, frays or deformation. All checkpoints must be checked to approve hoist for further use**

OK	Not OK
	Lifting column
	Lifting arm
	Legs
	Product label
	Plastic covers
	Hand control
	Actuator
	Wheels / castors
	Brakes on wheels / castors
	Charger
	Cables
	Battery
	Other electronics
	Sling bar, incl. padding
	Leg spreading mechanism
	No corrosion
	Weldings
	Instruction for use / user manual is present / available

Functional examination



Test FUNCTION and inspect for wear and damage.
All checkpoints must be checked to approve hoist for further use

OK Not OK

Wheels / castors
Rear wheel / castor brakes
With legs in inner position (parallel): Check that the distance between legs can not decrease when pushed together by hand
For Mover 180 only: Lifting column is completely fixed with hexagon locking screws tightly secured
For Mover 205 and 300 only: Lifting column is completely fixed when locking handle is engaged
Emergency stop button is fully operational and interrupts power when engaged. Reset switch.
Electrical emergency lowering
Manual emergency lowering
Hand control (buttons, strain relief on hand control cable, hook, and battery indicator)
Sling bar coupling (swivel joint moves freely and without noise)
Sling bar quick release
If all points so far are "OK", hoist shall be tested with SWL.
Perform one lifting cycle with weight equal to SWL (see product label for value kg/lbs). Actuator must not slip when loaded (causing lifting arm to lower).
Leg spreading mechanism, outwards and inwards with SWL
Perform new visual control; Damage, play and deformations as described above. Any damaged parts must be repaired or replaced and test is repeated once more until the hoist performs correctly

OK Not OK

Charger is operational
With fully charged battery inserted, after initial cycle, battery light is off, and wrench / service light is green
Accessories:
.....
.....
.....

Performed by

Full name:

Date/Place:

Signature:

Approved without faults

Next inspection (YYYY / MM):/.....

Hoist is marked with "Out of order" and sent for repair

Hoist is not eligible for repair and taken out of service

If periodic inspection reveals any defect, wear or other damage that jeopardises the safety of the patient the hoist may not be used until the deficiency has been eliminated

The owner is notified

Notes and observations

 **Due to legal requirements this document or a copy must be filed with the owner's service log book**

If approved without faults, apply inspection label and mark with month and year for **next** inspection. When ordering label, use item no. 1100306

Mark label with month and year for next inspection

